

Campus Newsletter



The Newsletter of the Aberfoyle Park Primary School Campus - Term 2 vol.2, 2013

In this issue...

Kid's Movie Night, Play Group, Soccer Clinic, Music Night and more!

Play 2 Learn - Play Group

Commencing in Term 3 (**Friday 26th July**) is the new Campus Playgroup "**Play 2 Learn**". Open to anyone with children aged 0-5 years, the Play Group will be held every Friday from 9-11am in the **Geoff Simpson Hall**. Entry is by gold coin and supports children learning with their parents through shared play experiences. The Campus Playgroup is led by **Kristy Baldock**. More info **8270 3077**.

Earn & Learn is over for 2013

Woolworths Earn & Learn is finished for 2013, but you still have some time to get any completed, partially completed sticker sheets or loose stickers back to Campus. Just drop them in the box at your school to be included. We have until 26th July to send them in. We currently have **25,020** points.

Holiday Soccer Clinic on again

This school holidays the **Soccer Holiday Camp** will again be held at Campus. **Joel Porter** from the Top Goal Soccer Academy will again have the inflatable soccer field here and students from Reception to Year 7 can enrol. The Camp is on **8th & 9th of July** (week 1 hols) or **15th & 16th July** (week 2 hols) 9am-3.30pm. Cost is **\$30 per day** and you can register for any day at www.tgsocceracademyadelaide.com.au



Inflatable Soccer Field



Support Campus via the Community Lottery

people's choice
COMMUNITY LOTTERY

Time is running out to get your ticket with a chance to win any of over 200 great prizes and support Campus at the same time! The **People's Choice Community Lottery** returns 100% of ticket sales back to the Campus. That means for every ticket sold, Campus keeps the money and that money will be used to help resource the Library, maintain grounds, buy sports and music equipment. The order form is below, so send it in to your school for a great



1st Prize

chance to win. This is a major fundraiser for the Campus Events Committee for this year, so please help.

First prize is a **Hyundai Santa Fe Active 2.2 CRDi Auto** (valued at \$41,254 incl. on road costs), second prize is a **Harvey Norman Shopping Spree** (worth \$35,000) plus there are over 200 more prizes to be won including the 3rd prize **Hyundai i30** which was recently on display at the front of the Campus during Open Day! Grab a ticket today.



2nd Prize

3rd Prize



I would like to support Campus and purchase tickets in the People's Choice Community Lottery.

Name: _____ Phone: _____

Email: _____ Student's Name: _____

Name of School: _____

Number of Tickets required: _____ Amount enclosed: _____

Please tear off this slip, place in an envelope and return to your child's school with the correct money. Your tickets will be sent home with your child.

Kids Movie Night

Put it in your diary! **Friday 26th July** is the **Campus Kids Movie Night**. There are **two sessions** both at the Performing Arts Centre (Rec to Year 3 students from 5.30 to 7.30pm to see "Madagascar 3") and (Year 4 to 7 from 8 to 10pm) to see "Escape from Planet Earth". Both sessions are rated PG. Tickets need to be pre-purchased and an order form will be sent home shortly with further details. Cost is a **\$6 donation** per child/per session and includes a drink and cup of popcorn. Seating at each session is limited, so don't delay.



There will also be other sweets available to purchase on the night. There will also be a tasty **sausage sizzle** for all, between the two sessions (7 to 8pm) outside the PAC. Sausages are \$2 each and cold drinks or coffee are also available. This is an initiative of the Campus Events Committee and all money raised will assist the various Campus programs, so please come along and support the Campus for a fun night in.

Campus Music Night

The 2013 Campus Instrumental Music Night was a great success for all involved. If you would like a DVD copy of the event, please see Carol at the Campus Office. It's just \$10.



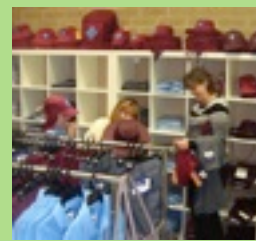
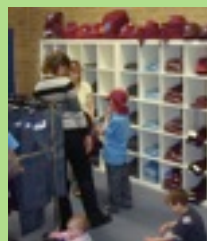
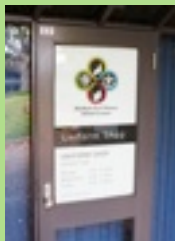
Show your **Campus Card** every Tuesday for **\$2 hire** on all movies & games

Aberfoyle Park
8370 5022
Shop 10- Aberfoyle Village Shopping Centre, Hub Drive

Shop locally and support the businesses that support us!

Campus Uniform Shop

Located between the Library and the Campus Office, the Uniform Shop is open
Monday 2.30pm to 3.30pm
Wednesday 8.30am to 9.30am
Friday 8.30am to 9.30am



Campus Library Book Fair

The Library is holding a Book Fair from Thursday 27th June for one week til Thursday 4th July. As it was last year, it will be in the Library Classroom and operating times vary so check with the Library staff. This is a great opportunity for your children to purchase some of the latest books, so check the wish list.



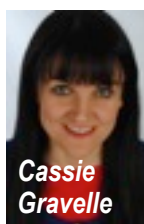
Sustainability Update



Shelter construction

The Garden continues to see progress with the addition of the outdoor learning shelter being built by the Men's Shed group and activities commencing with the Community Garden Group's relocation to the site very soon.

Stage School



Cassie Gravelle

Interested in acting, singing or dancing? Want to have fun, learn new skills & perform? International qualified performing arts teacher and film/TV/theatre actress **Cassie Gravelle** is opening a **Stage School** in Term 3 on Saturday mornings. To find out more or to book a place, call Cassie on 0428 985 679 or visit www.startrailperformingarts.com.au

"Campus Kids" Play Cafe

The Campus Kids Play Cafe is **open every Tuesday & Friday from 9.30am to 1.30pm** during school terms in the Geoff Simpson Hall. Entry is just a gold coin and there's always great coffee & delicious home baked goodies.



Play Cafe fun

"Campus Kids" Play Cafe is also looking for eager volunteers to assist each Tuesday and Friday. If you are interested, please contact Philip on Mon/Tues or Fri at Campus on **8270 3077**.

Check the Campus website for a full list of all Campus Card participating businesses at www.appscampus.sa.edu.au

The Campus Newsletter is proudly produced by the Campus Development Officer - Philip Elms

